



# GOURDON LOCAL RULES



Welcome to all participants,  
for the smooth running of the event and the sustainability of the site,  
please beware of the following information:

The Gourdon site and the Loup valley have for decades enabled the  
successful holding of competitions and performance flights.

This is only possible thanks to a courteous relationship between the free  
flight community and locals.

**Respect local residents and land owners.**

**Be courteous and apologize in case of landing on private land.**

Drive carefully on local roads  
particularly on the Embarnier takeoff access runway.

Use carpooling to minimize traffic.

Use and respect the official parking areas (Valettes LZ).

Do not leave any waste (penilex, papers, etc.)

Respect the volunteers and members of the organization.

**Beware of starting fires!**

**Do not smoke on the take-off area.**

# LANDINGS

Main landings are listed in the waypoints file

**A : Official Landing Spots : A01 (Valettes), A02 (Abeilles) etc.**

**X : Emergency Landing Spots : Non official, use for emergency**

**Special case : X03016-PT-LOUP (called "Les Poules")**

**Any landing between Gourdon village and the official Valettes LZ is forbidden (penalty)**

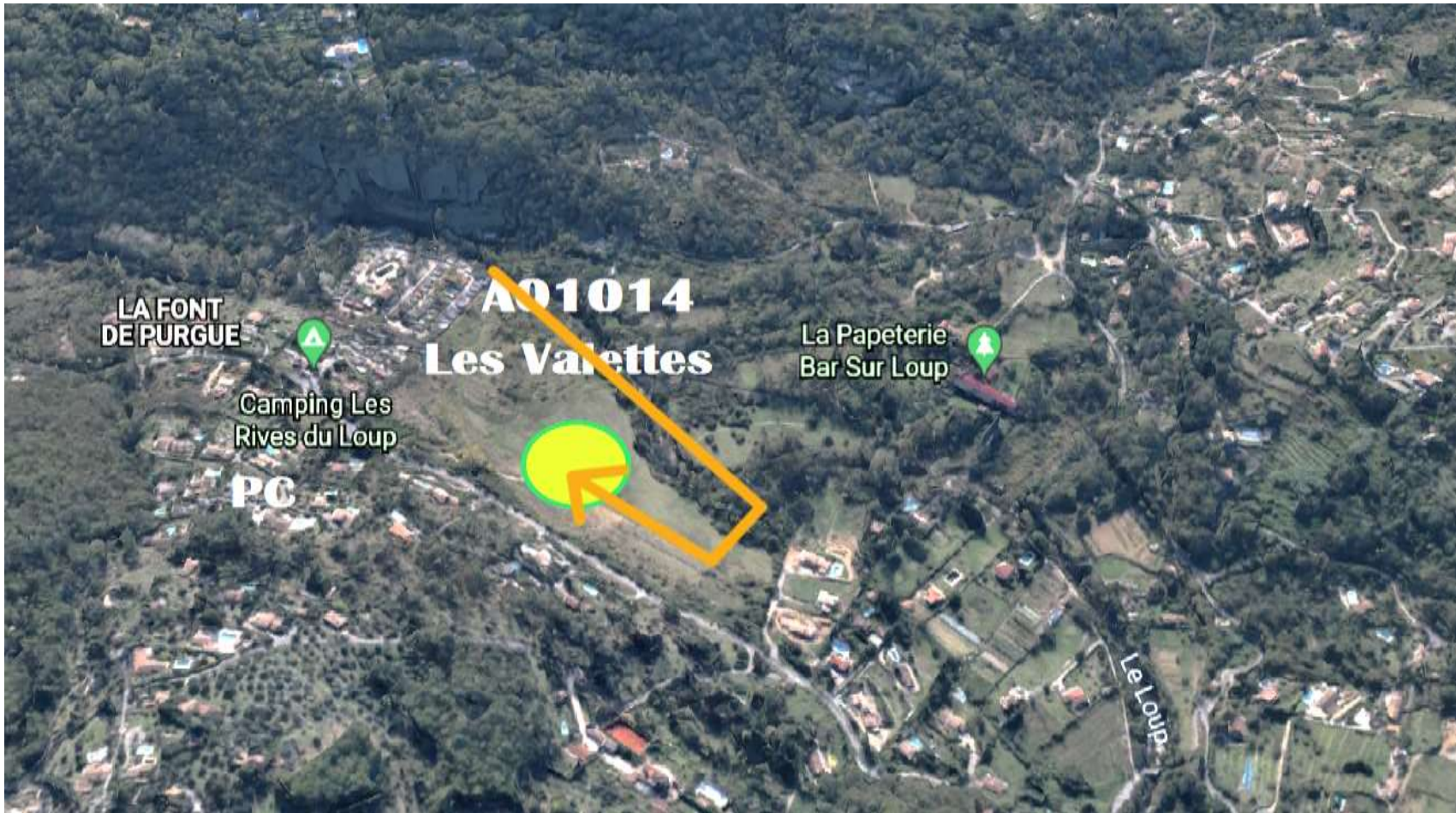




# A01014-VALETTES EAST /SE (Valley Breeze)

**BEWARE of HANG GLIDERS**

if landing simultaneously keep away from the river side of the field  
(stay on the road side)





## **A09071 is the only Official LZ in SAINT-VALLIER**

any landing in the big field ("Grand pré") in the centre of the village or in the sports field East of the village is forbidden (penalty)





# SAFE LANDINGS

## Tourettes- Naouri -Vence

**B08102**  
**Naouri**

**Chevaux**

**Terrasses**

**Tourettes**  
**s/Loup**

Bastide Aux  
Violettes (Musée)

**A05032**  
**Gare tourettes**

Combe des  
Berguères





# Grasse-Magagnosc-pré du lac

**B12086**  
**700-Grasse**

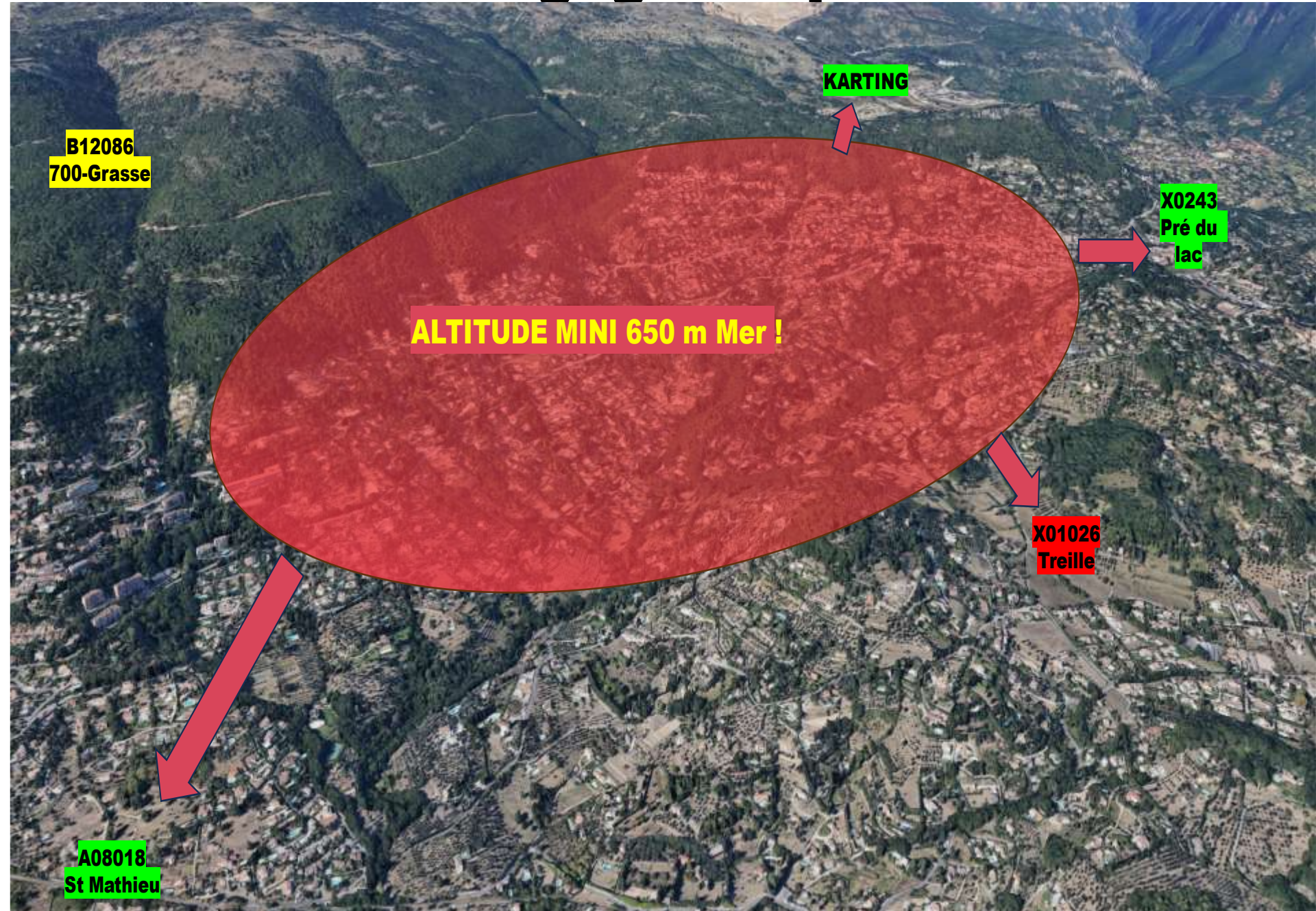
**KARTING**

**X0243**  
**Pré du lac**

**ALTITUDE MINI 650 m Mer !**

**X01026**  
**Treille**

**A08018**  
**St Mathieu**

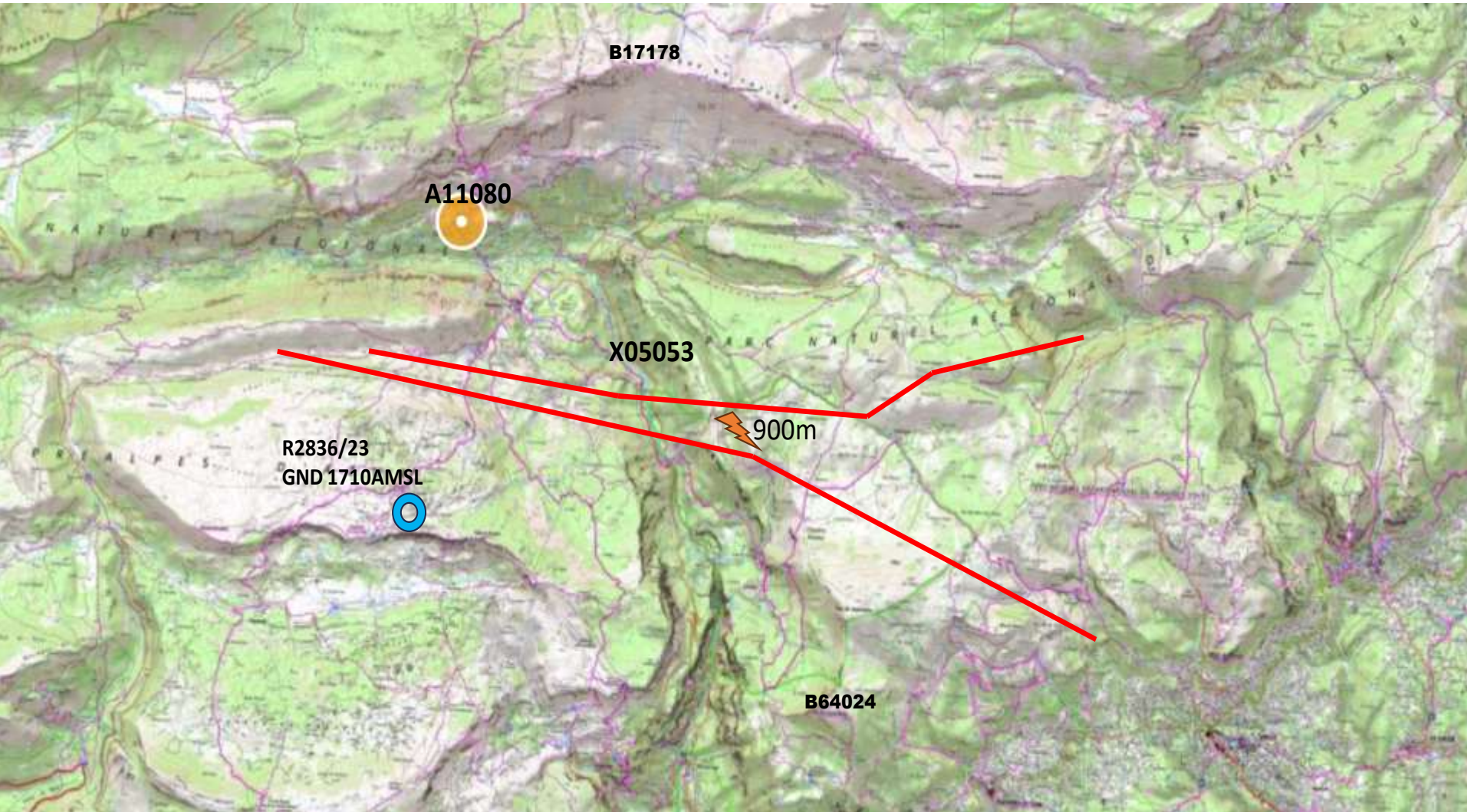




Between Gréolières and Pont du Loup, the Loup Valley is crossed **by two power lines at 900m AMSL.**

If you come back from Gréolières, ensure you cross them with a good enough margin to be within reach of the fields on the plateau of Courmes.

## GORGES DU LOUP





# THORENC

**X04118** Natural Reserve of the Monts d'Azur  
(wild animals) **FORBIDDEN** (penalty)

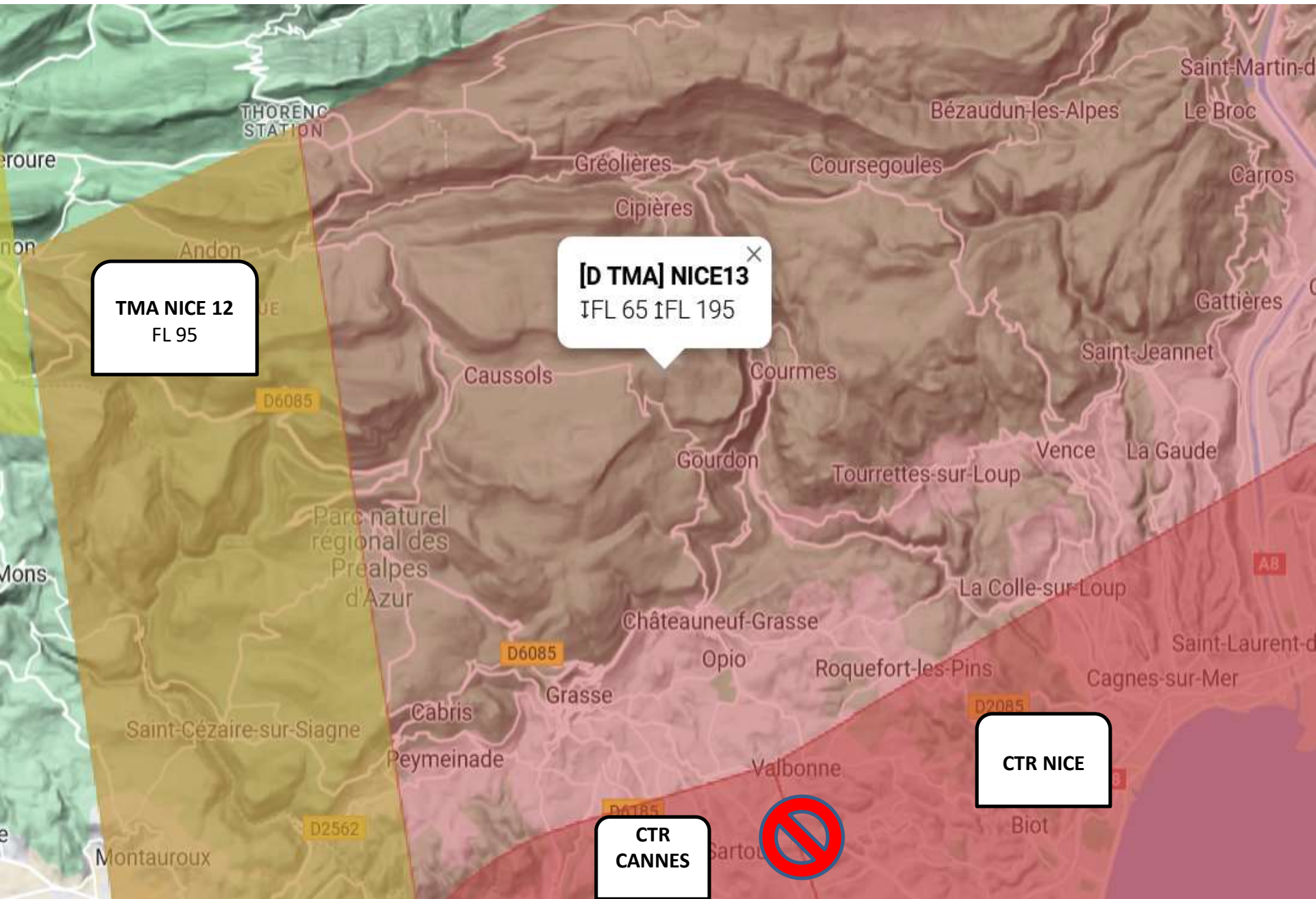


THORENC

A10113



# ESPACE AERIEN



**TMA NICE 12**  
FL 95

**[D TMA] NICE13**  
IFL 65 IFL 195

**CTR NICE**

**CTR CANNES**







Only **GPS** altitudes will be considered  
System : **Ellipsoid WGS – 84**

Unless an exemption from the DGAC is mentioned in the morning briefing:

**TMA NICE 13 FL 65 : 1980m**

**TMA NICE 12 FL 95 : 2900m**

**R2836/23 Calern Observatory GND-1710m AMSL**

**Grasse Prison : GND-1110m AMSL**

**RESPECT OF VISUAL FLIGHT RULES AND AIR RULES**

**BY PARTICIPATING IN THE COMPETITION, EACH PILOT COMMITS TO  
UNDERSTANDING AND ABIDING TO LOCAL RULES**

**FLY SAFE AND ENJOY THE COMPETITION !**

